



WWW.JUNAPACK.COM

JUNAPACK



Pouch Packer

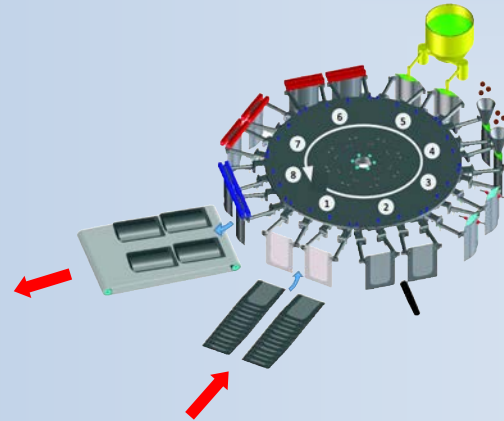


The performance of 40 years innovation

JUNAPACK

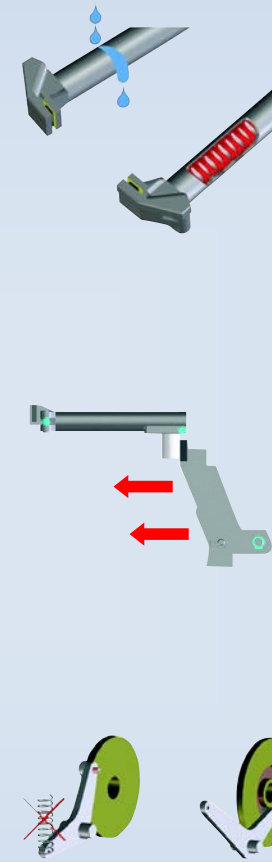
Rotary packaging process

1. Empty pouch loading
2. Date coding
3. Pouch opening
4. 1st filling



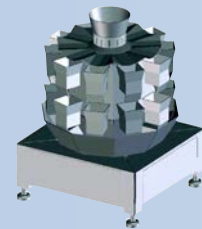
5. 2nd filling
6. 1st top heat sealing
7. 2nd top heat sealing
8. Top seal cooling and pouch exit

Exclusive features that deliver key benefits

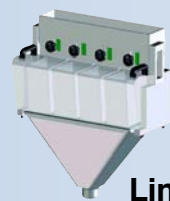


- ◆ No pouch jams on pouch infeed conveyor using a wider drive belt (Patented).
- ◆ Cylinder type gripper is an inherent robust design and prevents dirt from building up—sanitary design for food packaging.
- ◆ Spring inside gripper design prevents corrosion and dirty springs, as well as eliminates the risk of a broken spring falling into a pouch.
- ◆ Easy pouch size changeover in 5 minutes.
- ◆ Horizontal movement of gripper pusher prevents grippers from bending (Patented).
- ◆ Electrical cabinet is on top of machine to prevent water and dust from easily entering.
- ◆ No springs with mechanical cams reduce vibration and bouncing at high speeds which results in less maintenance.
- ◆ Automatic grease pump for central lubrication of mechanical cams is a standard feature.
- ◆ Robustly built machine that weighs 6,600 lbs.—outer components are made of 304 Stainless Steel, anodized aluminum alloys and food grade plastic.

Easy synchronization to different filling systems



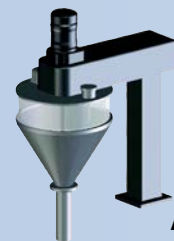
Multihead Weigher



Linear Weigher



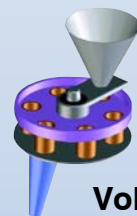
Flow Meter



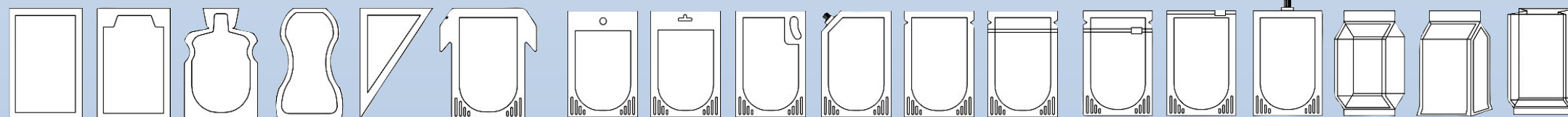
Auger Filler



Piston Filler

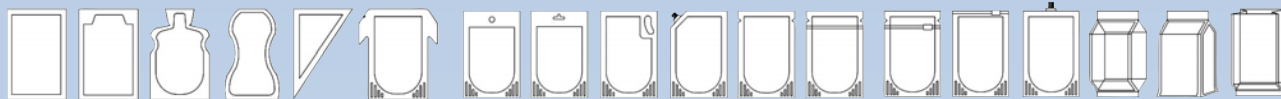


Volumetric Filler

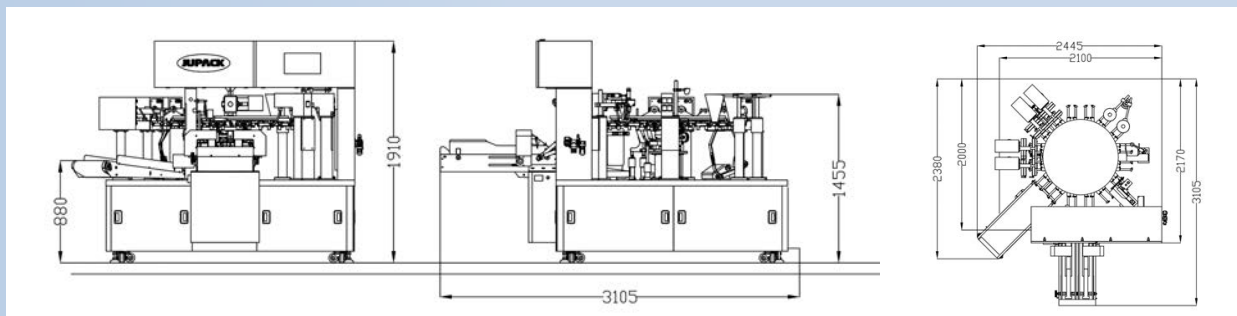


Wide range of pouch styles and sizes possible





Durable design and compact footprint



Machine Range

Model		JR-6S2540	JR-8S1024	JR-8S1331	JR-8D0915	JF-8S0815
Speed (Pouches/Min)		10-30	30 - 50	30 - 50	60 - 90	30 - 40
Production speed depends on product, pouch type/set and filling volume						
Pouch Size range (mm)	Width	250 - 400	100-245	130-310	90-150	80-150
	Length	-470	-400	-470	-400	-400

Technical Data

Power consumption	4.5kW (3 phase)
Air consumption	14 CFM (350 l/min), 80-100psi
Controls	Allen-Bradley
Touch screen	Proface
Main drive motor	SEW (Germany)
Pneumatics	SMC



2020 American Blvd
De Pere, WI 54115



Phone: 920-983-7323
Email: info@junapack.com

WWW.JUNAPACK.COM